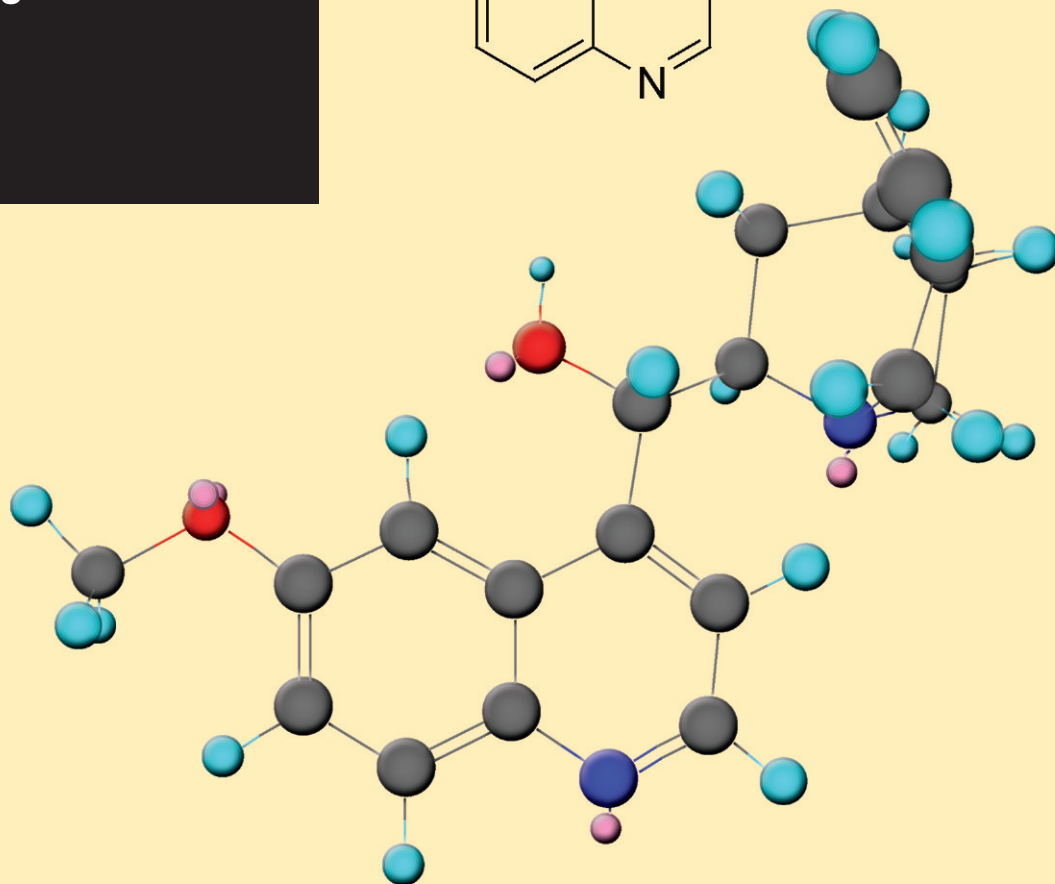
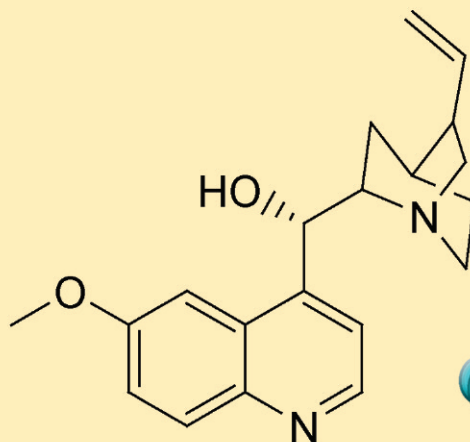
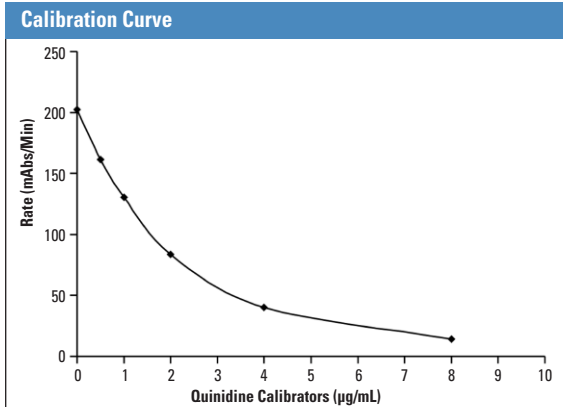


**Thermo Scientific
QMS[®] Quinidine**



The Thermo Scientific QMS Quinidine Immunoassay is intended for the quantitative determination of quinidine in human serum or plasma on automated clinical chemistry analyzers. The results obtained are used in the diagnosis and treatment of quinidine overdose and in monitoring levels of quinidine to help ensure appropriate therapy.

QMS liquid-stable reagents offer superior assay performance and are widely applicable to general chemistry analyzers.



Assay Range: 0.2 to 8.0 µg/mL
LDD: 0.2 µg/mL

Accuracy

Recovery was determined by spiking quinidine into human serum to achieve concentrations across the assay range. A mean of duplicates for each sample was determined and percent recovery calculated. Representative results are shown below.

Theoretical Concentration (µg/mL)	Mean Concentration (µg/mL)	Percent Recovery
2.00	1.94	97%
4.00	3.95	99%
8.00	7.79	97%

Precision

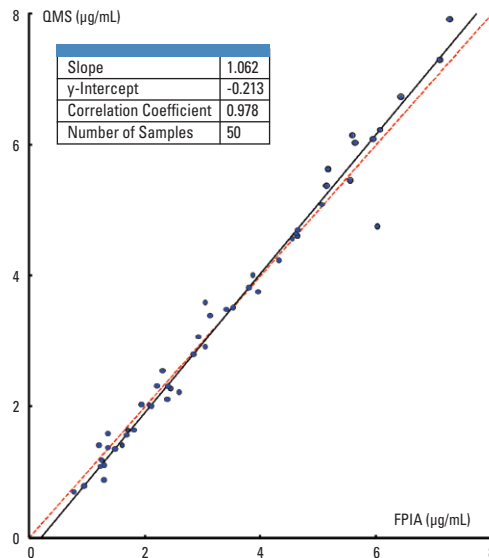
A tri-level human serum based commercial control containing quinidine was used in the study. Representative results are shown below.

WITHIN RUN			
n = 80	Mean (µg/mL)	SD	CV
1	1.02	0.06	5.83%
2	3.17	0.08	2.45%
3	5.18	0.08	1.62%

TOTAL RUN			
n = 80	Mean (µg/mL)	SD	CV
1	1.02	0.09	9.09%
2	3.17	0.20	6.37%
3	5.18	0.30	5.83%

Method Comparison

Results of serum and plasma samples analyzed for quinidine by the QMS Quinidine Immunoassay were compared with the results obtained using a Fluorescence Polarization Immunoassay (FPIA) system. The quinidine concentrations ranged from 0.71 to 7.92 µg/mL. Results are shown below.



Stability

Reagent Open-Vial Stability:
 Up to 45 days*

Shelf Life of Reagents and Calibrators:
 Reagents: 12 months from date of manufacturing
 Calibrators: 18 months from date of manufacturing
 *Results are typical and might not be achieved on all chemistry analyzers.

Ordering Information

QMS Quinidine Reagent Kit.....0373936
 QMS Quinidine Calibrator Set.....0374165

Application sheets for specific clinical chemistry analyzers available upon request.

CAP proficiency data is collected and available upon request.